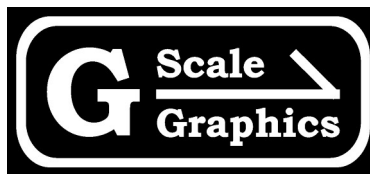
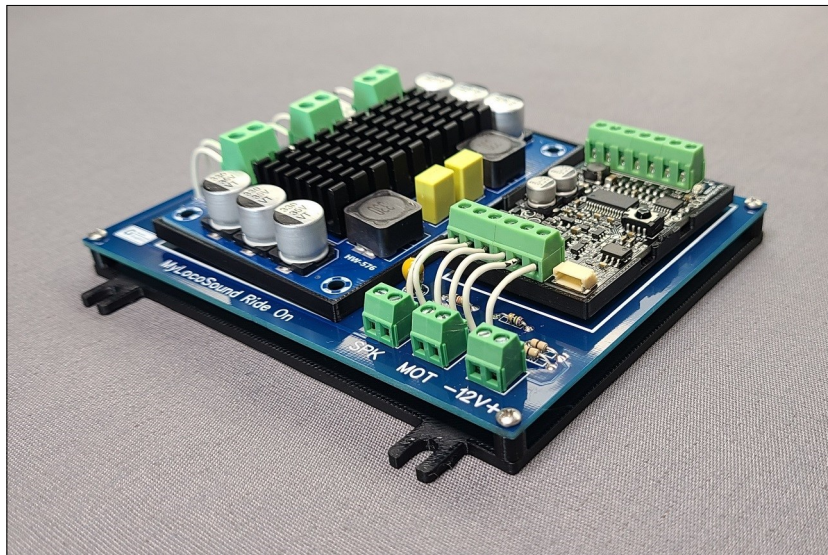


# MyLocoSound for Ride-On Locos

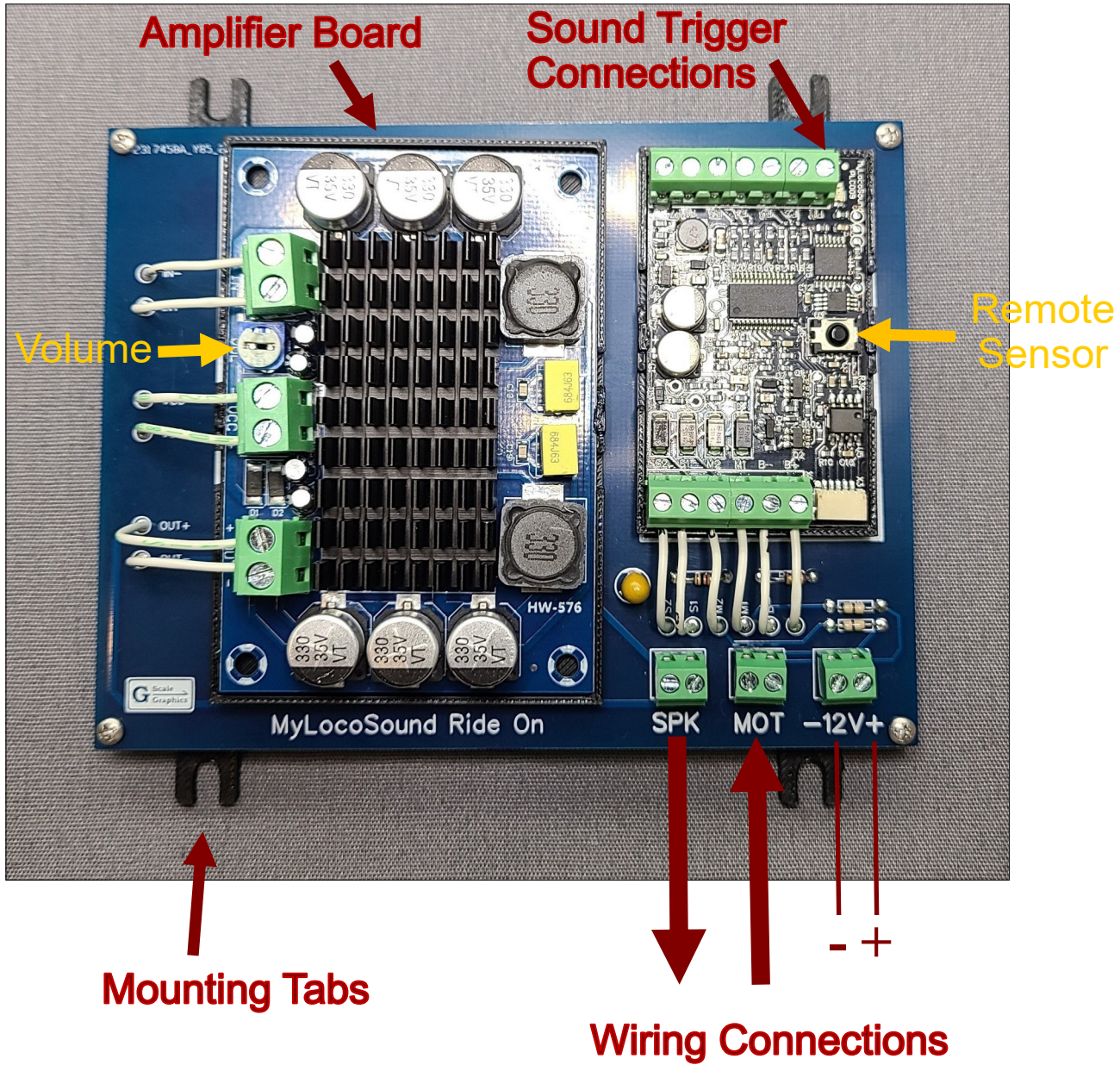
## Operation and Installation Manual



G-Scale Graphics  
5860 Crooked Stick Dr.  
Windsor, CO  
970-581-3567

[GScaleGraphics@comcast.net](mailto:GScaleGraphics@comcast.net)

[www.GScaleGraphics.net](http://www.GScaleGraphics.net)



## Installation

### Wiring

-12V+ terminals: 12VDC (12-22Vmax)

MOT terminals: Motor voltage to detect speed. 0 to max voltage of 12V, 24V, 36V, or 48V. Please specify.

SPK terminals: 4 or 8 ohm speaker, 30W or greater.

Individual sounds from the MyLocoSound board can be triggered using momentary switches connected between the F1-F7 terminals of your choice, and terminal 12V-.

The amplifier and MyLocoSound boards are clipped into a backing plate. If needed, they can be removed using a screwdriver in the slots provided to gently pry them out.

## Overview

MyLocoSound modules have a maximum audio power output of 3W, which is suitable for G-Scale garden railroads, but larger scale, outdoor ride-on locomotives, require an audio amplifier and much larger speaker to boost the audio output.

The MLS Ride-On consists of a MyLocoSound module and a 100W audio amplifier on a compact mounting plate suitable for installation in a ride-on loco; just add a speaker. This eliminates the purchase and wiring to a 3rd party audio amplifier.

## Operation

Overall volume of the amplifier is set using a small potentiometer on the amplifier circuit board. Fine tune volumes of individual sounds using the MyLocoSound remote aimed at the sensor on the MyLocoSound circuit board. You should find that once the volumes are set as desired, there is no need for the remote, unless you want to change the configurations of sounds.

Sound the horn and bell as desired using momentary switches on the dashboard of the loco connected to the sound trigger terminals of the MyLocoSound board.

**For detailed information, refer to the instructions for your specific sound card at <https://www.gscalegraphics.net/manuals>**

## MyLocoSound Ride-On Specifications

### Mechanical

Physical Size: 4.8" X 4.5" X 1.1"H with bulkhead mounting tabs.

Wiring: Screw clamp terminal strips accept individual wires, 22 to 18 AWG.  
(22 or 20 AWG recommended)

### Electrical

Power Input from an external DC Power Supply: 12-22 VDC, 4 amps  
Must be a filtered regulated DC power supply. Not a hobby power pack, or a simple transformer.

Motor Input (for speed detection)  
12, 24, 36, or 48V, specified when ordering.

Audio Amplifier: TPA3116DA, Mono, 100W? (probably more like 25W with 8 ohm speaker, 50W with 4 ohm)

Speaker Output  
4 to 8 ohms, 25W or greater.

MyLocoSound board: Your choice of Diesel, Light Diesel, etc.