

# ***RailBoss 4 R/C***

***R/C Control of your Locomotive  
Via Battery or Track Power.***

***Everything you would expect and more !***





# ***RailBoss 4 R/C***

## ***Robust User Friendly Electronics ...***

- ***Standard 5 Amp Motor Driver  
(Optional 10 Amp)***
- ***Reverse Input Voltage  
Protection***
- ***Integrated Control  
and Receiver***
- ***User Programmable Functions  
(No Computer Required)***



# ***RailBoss 4 R/C***


## ***The Usual Functions ...***

- **Precise Speed Control via Push Buttons**
  - **Selectable Rate from TX**
- **Controlled “Quick” Stop (to avoid gear damage)**
- **Direction Control with**  
**Constant Brightness Directional Lighting Outputs**
- **Four Sound Trigger Outputs**



# ***RailBoss 4 R/C***

***with Features Found Nowhere Else ...***

- **Automated Station Stops via Track Magnets**
- **Run Multiple Trains on the Same Loop with automatic separation**
- **Low Battery Warning and Cutoff for Lithium Batteries**
- **Direct Control of Phoenix Sound Remote Un-Couplers** 
- **Random Track Activated Whistle**



# ***RailBoss 4 R/C***

## ***The Perfect Size Transmitter ...***

- **Fits in the Palm of your Hand or in your Pocket**
- **6 Buttons Control 13 Functions**
- **Long Life Battery**  
**No On/Off Switch**
- **Internal Antenna**



# ***RailBoss 4 R/C***

## ***The Best Radio System ...***

- **2.4 GHZ, DSSS, FCC Certified  
Range up to 800 feet !**
- **One Transmitter Controls All of your Trains,  
Any One at a Time**
- **No Motor Interference Problems**
- **No Channels or Frequencies to Worry About**
- **No Long Antenna on TX or Train**



# ***All PURPOSE TRAIN CONTROL (APTC)***

*for Automated or Interactive Train Displays*



- **Train runs automatically at timed intervals**
- **Push Button or Motion Detect Starts**
- **Automated Station Stops**
- **and Manual Operation**



# ***Enhanced Critter Control***

***Semi-Automatic Operation  
for Battery Power***



- **Start / Stop and Control Speed  
with roof mounted knob / button  
(like the volume control on your car radio)**
- **Automated Station Stops  
and Back 'n Forth Operation  
via Track Magnets / Reed Switches**
- **Directional Constant Current Lighting Outputs**



# *Trackside R/C (6<sup>th</sup> Generation)* *for Track Power*





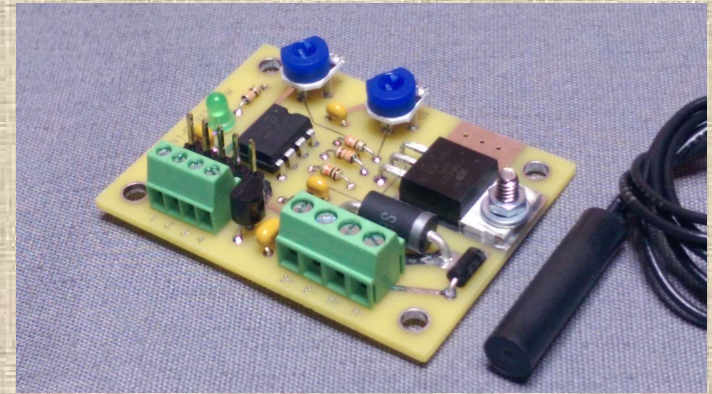
# ***Trackside R/C (6<sup>th</sup> Generation)*** ***for Track Power***

- **No Modifications to Loco Required !**
- **Use Existing Power Pack or any DC Power Supply**
- **Controls Voltage to the Track**
- **Automated Station Stops**
- **Back 'n Forth Operation**
- **Up to 10 amps for Big Trains**
- **Save/Recall Running Speed**





# ***Magnetic Critter Control***



***Designed for Continuous Running  
(Battery Power)***

- **Start / Stop via Hand Held Magnet and Hidden Reed Switch under Roof**
- **Automated Station Stops via Track Magnets**
- **Adjustable Running Speed and Accel Rate**
- **Low Cost, No R/C, Solution**

# ***No Frills Track Throttle*** ***for Track Power***

- **No Frills!**  
Just the power you need to run trains ... 10 amps
- **PWM Output for low speed torque**
- **Speed and Direction Control**
- **Use any 7-28V DC Power Supply, or our AC to DC Power Adapter.**

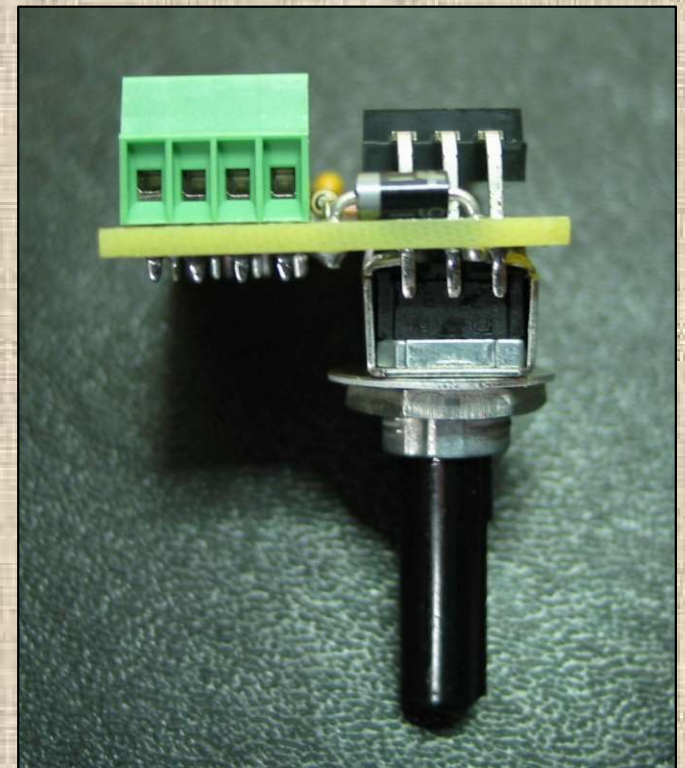




# ***Simple Critter Control***

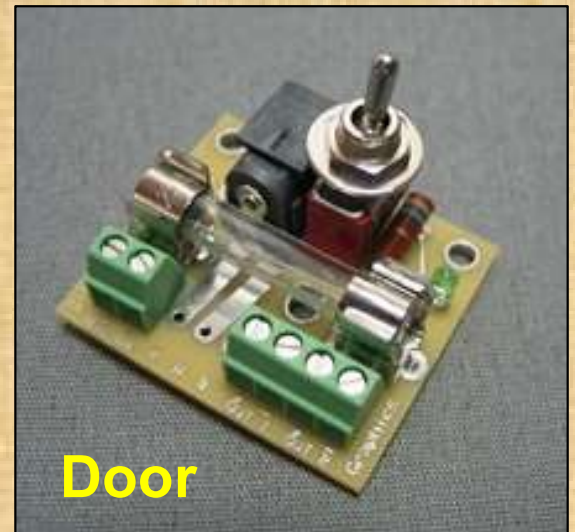
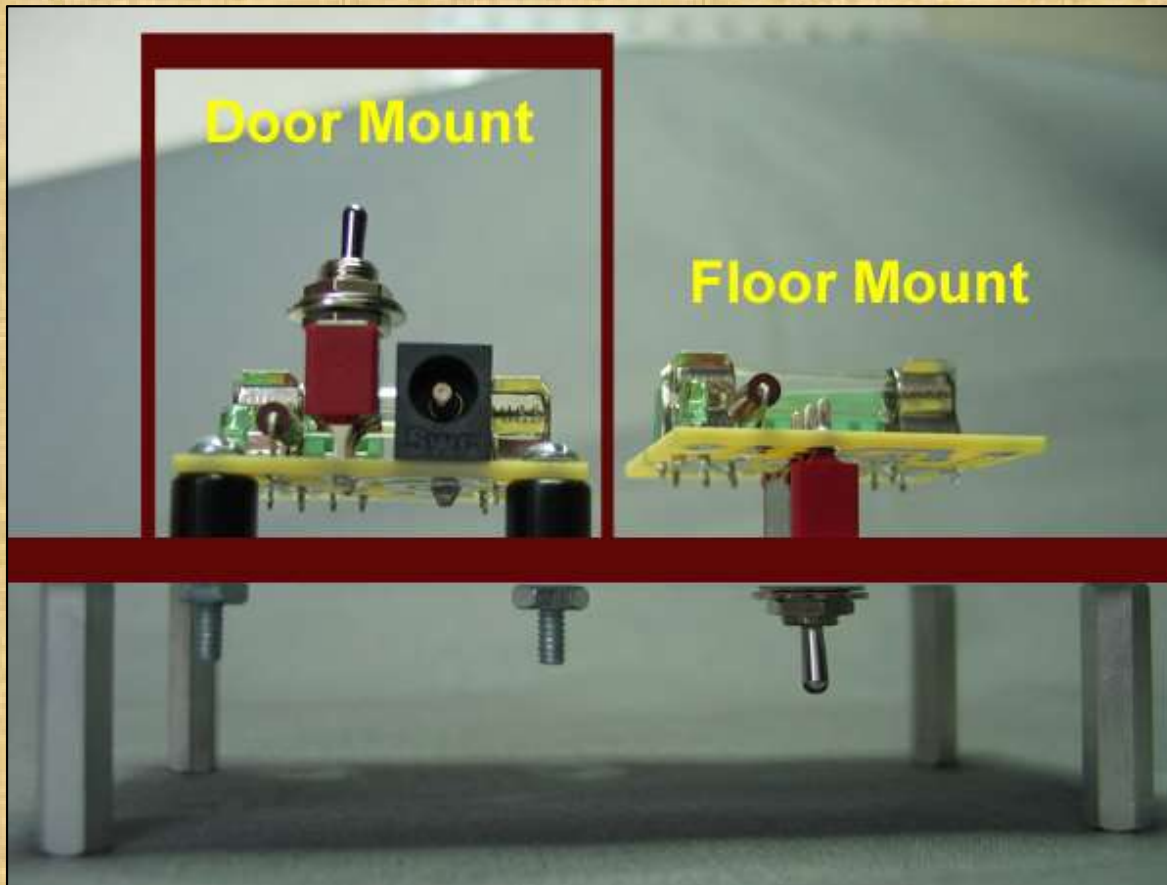
## ***Manual Operation (Battery Power)***

- **Speed adjustable via Roof Mounted Knob (Easily Disguised)**
- **Full 5-Amp PWM Motor Driver**
- **4 Wire Installation (Battery In, Motor Out)**
- **Low Cost, No R/C, Solution**



# ***Battery Conversion***

## ***Modules*** ***Simplify Any Battery Power Conversion***





# ***Battery Conversion***

## ***Modules***     ***Simplify Any Battery Power Conversion***

- ***Power On/Off Switch, Fuse, Charging Jack***
- ***Screw Terminals, No Soldering***
- ***Extra Output Terminals for Sound Board***
- ***Door Mount for Trailing Cars***
- ***Floor Mount with Remote Charging Jack  
For Tenders or Diesels***

# ***MyLocoSound***

***Low Cost / High Quality Sound***

***Steam, Diesel, Light Diesel, Goose,  
Electric, Tram/Street Car***

- **Only \$99 !**
- **Track  
or Battery Power**
- **Compatible with  
RailBoss R/C, Revolution, RCS, and others**
- **Trigger sounds via R/C, Remote, or Track Magnets**





# ***Back 'n Forth Track Throttle*** ***for Track Power***

- **Back 'n Forth trolley or point to point operations**
- **Self Contained 5 amp throttle for speed setting**
- **Smooth Starts and Stops**
- **Diodes for isolated track end blocks**
- **Requires external DC Power Supply (7-25VDC) or our AC to DC Power Adapter**





# *Sound Clip Module*

## *Sound Effects for Buildings & Rolling Stock*

- Plays any .mp3 file from our library or yours
- Trigger via switch or play in a continuous loop
- Power from 9V battery or 12V DC supply





# Track Odometer

*How many feet of track do you have?*

- Magnet / Reed switch on car wheel measures distance.
- On-board display reads out in Feet or Meters traveled
- Built-in calibration routine allows use on any car with any wheel diameter.

