

RailBoss 4 R/C

R/C Control of your Locomotive

Via Battery or Track Power.

Everything you would expect and more !



RailBoss 4 R/C

Robust User Friendly Electronics ...

- ***Standard 5 Amp Motor Driver
(Optional 10 Amp)***
- ***Reverse Input Voltage
Protection***
- ***Integrated Control
and Receiver***
- ***User Programmable Functions
(No Computer Required)***




RailBoss 4 R/C

The Usual Functions ...

- **Precise Speed Control via Push Buttons**
 - **Selectable Rate from TX**
- **Controlled “Quick” Stop (to avoid gear damage)**
- **Direction Control with
Constant Brightness Directional Lighting Outputs**
- **Four Sound Trigger Outputs**

RailBoss 4 R/C

with Features Found Nowhere Else ...

- **Automated Station Stops via Track Magnets**
- **Run Multiple Trains on the Same Loop with automatic separation**
- **Low Battery Warning and Cutoff for Lithium Batteries**
- **Direct Control of Phoenix Sound Remote Un-Couplers** 
- **Random Track Activated Whistle**



RailBoss 4 R/C

The Perfect Size Transmitter ...

- **Fits in the Palm of your Hand or in your Pocket**
- **6 Buttons Control 13 Functions**
- **Long Life Battery**
No On/Off Switch
- **Internal Antenna**



RailBoss 4 R/C

The Best Radio System ...

- **2.4 GHZ, DSSS, FCC Certified
Range up to 800 feet !**
- **One Transmitter Controls All of your Trains,
Any One at a Time**
- **No Motor Interference Problems**
- **No Channels or Frequencies to Worry About**
- **No Long Antenna on TX or Train**

Enhanced Critter Control

***Semi-Automatic Operation
for Battery Power***



- **Start / Stop and Control Speed
with roof mounted knob / button
(like the volume control on your car radio)**
- **Automated Station Stops
and Back 'n Forth Operation
via Track Magnets / Reed Switches**
- **Directional Constant Current Lighting Outputs**

Trackside R/C (6th Generation) **for Track Power**

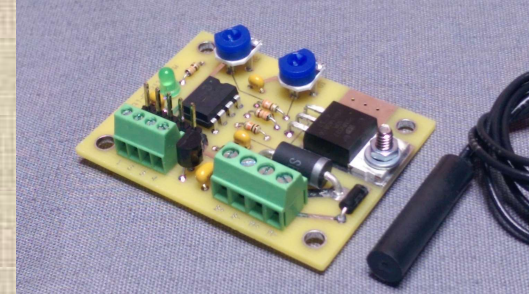


Trackside R/C (6th Generation) ***for Track Power***

- **No Modifications to Loco Required !**
- **Use Existing Power Pack or any DC Power Supply**
- **Controls Voltage to the Track**
- **Automated Station Stops**
- **Back 'n Forth Operation**
- **Up to 10 amps for Big Trains**
- **Save/Recall Running Speed**



Magnetic Critter Control



***Designed for Continuous Running
(Battery Power)***

- **Start / Stop via Hand Held Magnet and Hidden Reed Switch under Roof**
- **Automated Station Stops via Track Magnets**
- **Adjustable Running Speed and Accel Rate**
- **Low Cost, No R/C, Solution**

No Frills Track Throttle ***for Track Power***

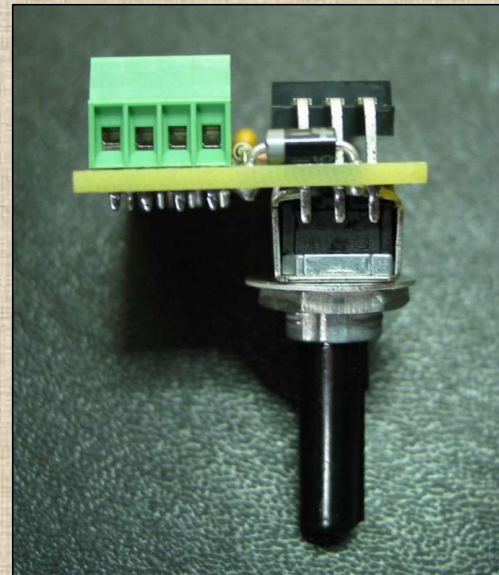
- **No Frills!**
Just the power you need to run trains ... 10 amps
- **PWM Output for low speed torque**
- **Speed and Direction Control**
- **Use any 7-28V DC Power Supply, or our AC to DC Power Adapter.**



Simple Critter Control

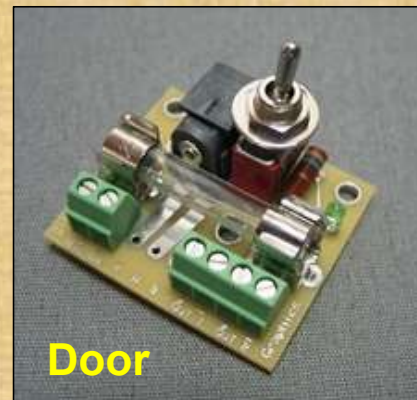
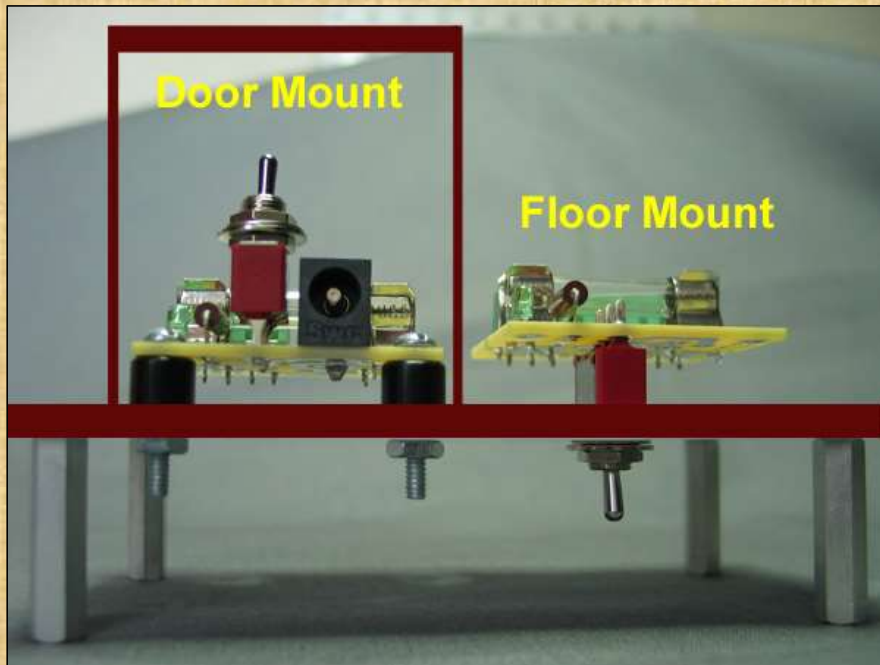
Manual Operation (Battery Power)

- **Speed adjustable via Roof Mounted Knob (Easily Disguised)**
- **Full 5-Amp PWM Motor Driver**
- **4 Wire Installation (Battery In, Motor Out)**
- **Low Cost, No R/C, Solution**



Battery Conversion Modules

***Simplify Any Battery
Power Conversion***



Battery Conversion Modules

***Simplify Any Battery
Power Conversion***

- ***Power On/Off Switch, Fuse, Charging Jack***
- ***Screw Terminals, No Soldering***
- ***Extra Output Terminals for Sound Board***
- ***Door Mount for Trailing Cars***
- ***Floor Mount with Remote Charging Jack
For Tenders or Diesels***

MyLocoSound

Low Cost / High Quality Sound

***Steam, Diesel, Light Diesel, Goose,
Electric, Tram/Street Car***

- **Only \$99 !**
- **Track
or Battery Power**
- **Compatible with
RailBoss R/C, Revolution, RCS, and others**
- **Trigger sounds via R/C, Remote, or Track Magnets**



Back 'n Forth Track Throttle ***for Track Power***

- **Back 'n Forth trolley or point to point operations**
- **Self Contained 5 amp throttle for speed setting**
- **Smooth Starts and Stops**
- **Diodes for isolated track end blocks**
- **Requires external DC Power Supply (7-25VDC) or our AC to DC Power Adapter**



Track Odometer

How many feet of track do you have?

- Magnet / Reed switch on car wheel measures distance.
- On-board display reads out in Feet or Meters traveled
- Built-in calibration routine allows use on any car with any wheel diameter.

